

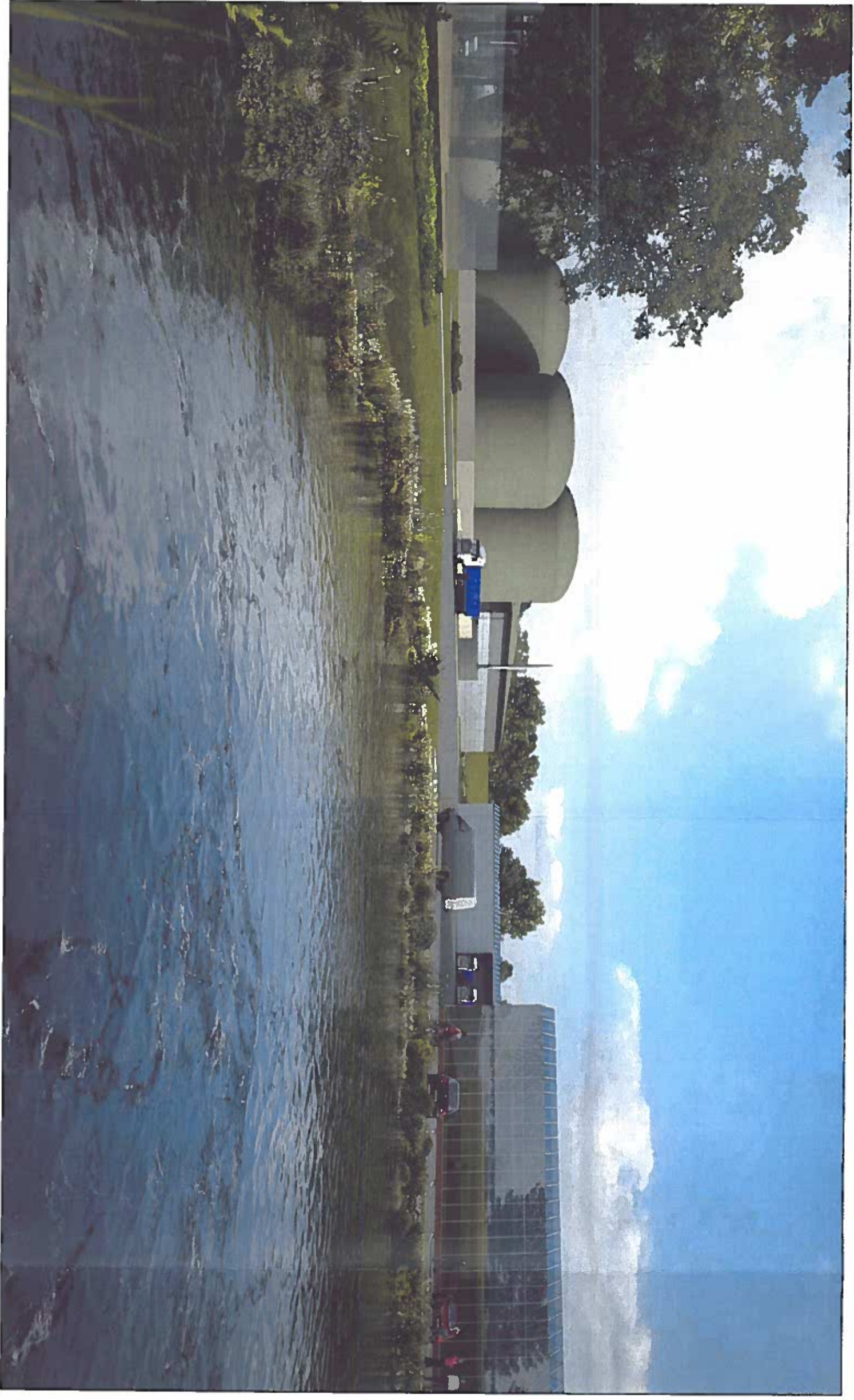
AGENDA ITEM (B)  
 CIRCULATED AT  
 MEETING

- MATERIALS**
- GLASSHOUSE ELEVATIONS:**  
 GLASS TYPE: CLEAR  
 FRAME, TRIMS AND CAPPINGS: COLOUR WHITE: RAL 9010  
 GUTTERS AND SOFFITS: COLOUR WHITE: RAL 9010  
 DELIVERY DOORS: SERVICE DOORS, MID GREY  
 FAST ACTING WITH YELLOW WARNING CHEVRONS/SKIRT  
 SERVICE DOOR SURROUNDS IN DARK GREY  
 COVER OVER WELFARE/ADMIN: PAINTED PLY WHITE RAL: 9010  
 COVER OVER BOILER: WHITE SMOOTH CLADDING PANEL SYSTEM  
 BOILER FLUE: LIGHT GREY SILVER

**PLANNING**

Project: North Selby AD and Glasshouse Buildings  
 Drawing Title: Proposed Glasshouse Floor Plan  
 Date: October 2012  
 Scale: 1:500 (A4) / 1:1000 (A3)  
 Project No: 21092  
 Drawing No: PP-010

**BARTON WILMORE**  
 Planning & Design  
 Architects • Landscape Planning & Design • Project Services  
 Environmental & Sustainability Assessment • Graphic Design  
 bartonwilmore.co.uk



5 Illustrative Views  
Proposed View From South

Not To Scale

AGENDA ITEM 4B) CIRCULATED AT MEETING

PLANNING

Project  
North Selby  
AD and Glass House Buildings  
Drawing No  
PP-024  
Date  
October 2012  
Project No  
21092

Drawn by  
MJS  
Checked by  
NCFM  
Reviewed  
P



ATTENDA ITEM 4B) CIRCULATED AT MEETING

4 Illustrative Views  
View of Proposed Classroom

Not to Scale

Rendered views are for illustrative purposes only. Images have been created using 3D modelling software, baseline information and topographical data. Views represent architectural intent to demonstrate the indicative development in context.

**PLANNING**

Project: North Selly  
AD and Glasshouse Buildings  
Drawing Title: Proposed Illustrative Views  
View Of Glasshouse  
Date: October 2012  
Scale: NTS  
Project No: 21092  
Drawing No: PP-022  
Drawn by: MCT/M  
Checked by: P  
Revision: P

21092-110001200-1210012000 - North Selly North Selly Proposed Ad and Glasshouse Buildings - Planning Application - 29.10.12 - BartonWilmore.co.uk



4 Illustrative Views  
 View of AD Buildings

1:16 TO SCALE

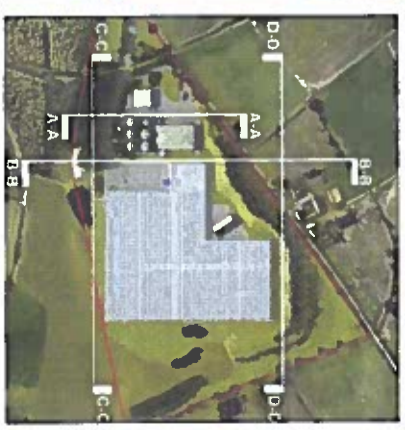
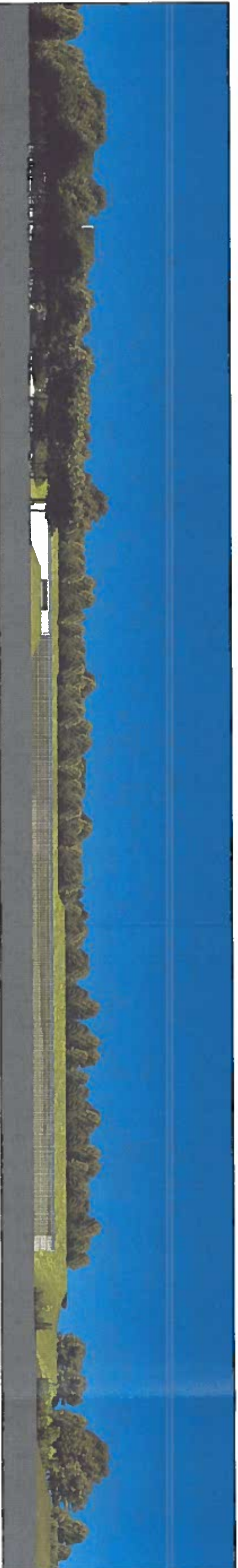
AGENDA ITEM (B) CIRCULATED AT MEETING

Rendered views are for illustrative purposes only. Images have been created using 3D modelling software, baseline information and topographical data. Views represent architectural intent to demonstrate the indicative development in context.

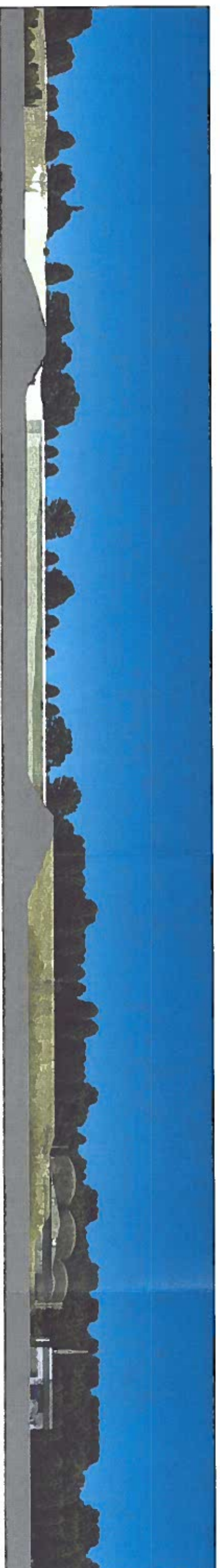
**PLANNING**

**Project:** North Selly  
**AD and Glass House Buildings**  
**Drawing Title:** Proposed Illustrative Views  
**View of AD Buildings**  
**Date:** October 2012  
**Scale:** NTS  
**Drawn by:** RY/SJ  
**Checked by:** MC/MN  
**Project No:** 21092  
**Drawing No:** PP-023  
**Revision:** P

# AGENDA ITEM 4B) CIRCULATED AT MEETING



1 Section C-C  
Proposed Alternative 2Ba Section  
1/8" Scale



Rendered views are for illustrative purposes only and do not represent final design. All dimensions and elevations are approximate. Views represent architectural level development in context.

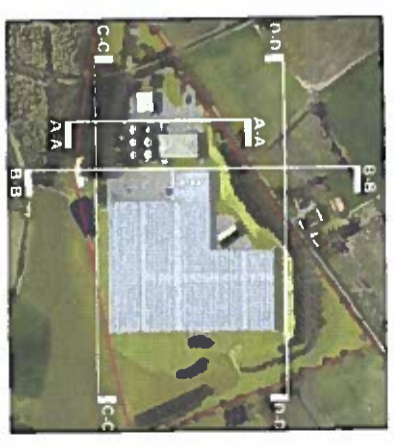
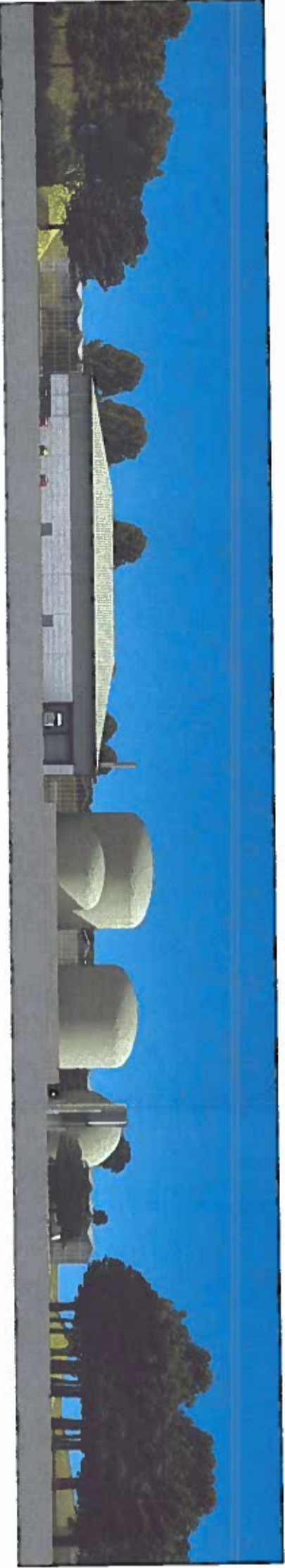
## PLANNING

North Arrow  
Site and Circulation Study  
Building 2Ba Section  
A-A, B-B  
C-C, D-D  
Date: 08/11/2023  
Scale: 1/8" = 1'-0"



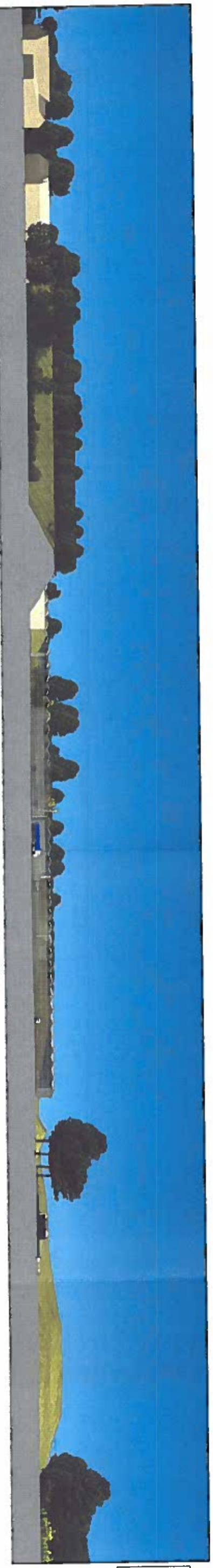
2 Section D-D  
Proposed Alternative 2Ba Section  
1/8" Scale

AGENDA ITEM 4B) CIRCULATED AT MEETING



1 Section A-A  
 Proposed Alternative Site Section  
 Not To Scale

City of San Diego Planning Department  
 1500 La Jolla Village Drive, Suite 200  
 San Diego, CA 92161  
 Tel: 619.441.3100  
 Fax: 619.441.3101  
 www.sandiego.gov/planning



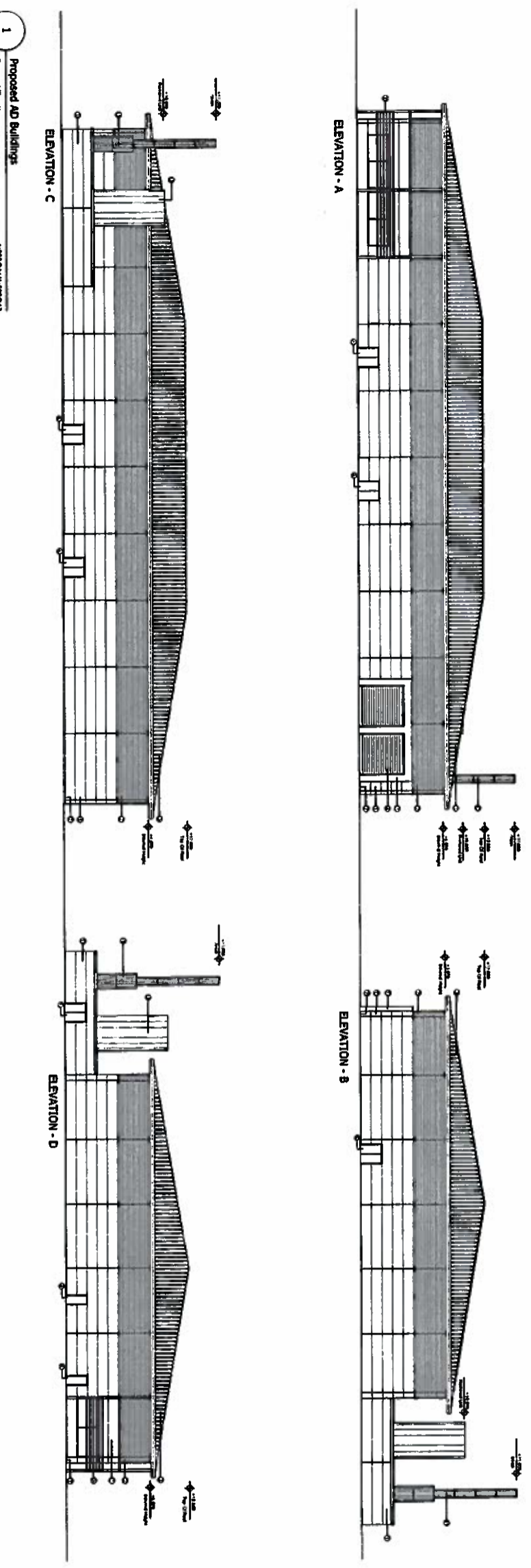
2 Section B-B  
 Proposed Alternative Site Section  
 Not To Scale

Rendered views are for illustrative purposes only. Images have been created using 3D modeling software. Spoken information and conceptual diagrams represent architectural intent to demonstrate the project's development in context.

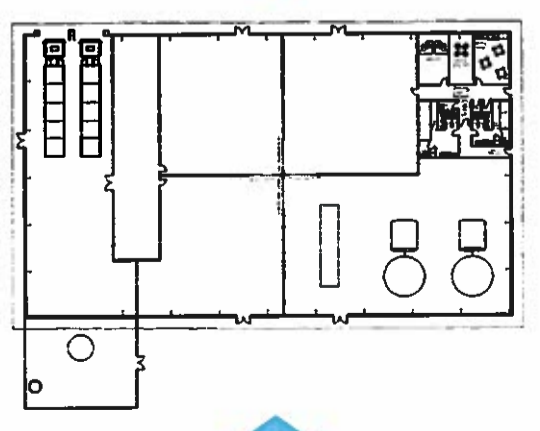
PLANNING

Project Name	1500 La Jolla Village Drive, Suite 200
Project No.	1500
Project Date	7/2018
Project Status	7/2018
Project Location	1500 La Jolla Village Drive, Suite 200
Project Contact	1500 La Jolla Village Drive, Suite 200
Project Manager	1500 La Jolla Village Drive, Suite 200
Project Designer	1500 La Jolla Village Drive, Suite 200
Project Engineer	1500 La Jolla Village Drive, Suite 200
Project Architect	1500 La Jolla Village Drive, Suite 200
Project Planner	1500 La Jolla Village Drive, Suite 200
Project Consultant	1500 La Jolla Village Drive, Suite 200
Project Advisor	1500 La Jolla Village Drive, Suite 200
Project Reviewer	1500 La Jolla Village Drive, Suite 200
Project Approver	1500 La Jolla Village Drive, Suite 200
Project Signatory	1500 La Jolla Village Drive, Suite 200
Project Seal	1500 La Jolla Village Drive, Suite 200
Project Stamp	1500 La Jolla Village Drive, Suite 200
Project Title	1500 La Jolla Village Drive, Suite 200
Project Description	1500 La Jolla Village Drive, Suite 200
Project Objectives	1500 La Jolla Village Drive, Suite 200
Project Goals	1500 La Jolla Village Drive, Suite 200
Project Outcomes	1500 La Jolla Village Drive, Suite 200
Project Impact	1500 La Jolla Village Drive, Suite 200
Project Benefits	1500 La Jolla Village Drive, Suite 200
Project Risks	1500 La Jolla Village Drive, Suite 200
Project Challenges	1500 La Jolla Village Drive, Suite 200
Project Opportunities	1500 La Jolla Village Drive, Suite 200
Project Constraints	1500 La Jolla Village Drive, Suite 200
Project Assumptions	1500 La Jolla Village Drive, Suite 200
Project Dependencies	1500 La Jolla Village Drive, Suite 200
Project Interactions	1500 La Jolla Village Drive, Suite 200
Project Relationships	1500 La Jolla Village Drive, Suite 200
Project Connections	1500 La Jolla Village Drive, Suite 200
Project Networks	1500 La Jolla Village Drive, Suite 200
Project Systems	1500 La Jolla Village Drive, Suite 200
Project Processes	1500 La Jolla Village Drive, Suite 200
Project Procedures	1500 La Jolla Village Drive, Suite 200
Project Policies	1500 La Jolla Village Drive, Suite 200
Project Practices	1500 La Jolla Village Drive, Suite 200
Project Principles	1500 La Jolla Village Drive, Suite 200
Project Standards	1500 La Jolla Village Drive, Suite 200
Project Guidelines	1500 La Jolla Village Drive, Suite 200
Project Specifications	1500 La Jolla Village Drive, Suite 200
Project Requirements	1500 La Jolla Village Drive, Suite 200
Project Conditions	1500 La Jolla Village Drive, Suite 200
Project Parameters	1500 La Jolla Village Drive, Suite 200
Project Variables	1500 La Jolla Village Drive, Suite 200
Project Constants	1500 La Jolla Village Drive, Suite 200
Project Limits	1500 La Jolla Village Drive, Suite 200
Project Boundaries	1500 La Jolla Village Drive, Suite 200
Project Constraints	1500 La Jolla Village Drive, Suite 200
Project Assumptions	1500 La Jolla Village Drive, Suite 200
Project Dependencies	1500 La Jolla Village Drive, Suite 200
Project Interactions	1500 La Jolla Village Drive, Suite 200
Project Relationships	1500 La Jolla Village Drive, Suite 200
Project Connections	1500 La Jolla Village Drive, Suite 200
Project Networks	1500 La Jolla Village Drive, Suite 200
Project Systems	1500 La Jolla Village Drive, Suite 200
Project Processes	1500 La Jolla Village Drive, Suite 200
Project Procedures	1500 La Jolla Village Drive, Suite 200
Project Policies	1500 La Jolla Village Drive, Suite 200
Project Practices	1500 La Jolla Village Drive, Suite 200
Project Principles	1500 La Jolla Village Drive, Suite 200
Project Standards	1500 La Jolla Village Drive, Suite 200
Project Guidelines	1500 La Jolla Village Drive, Suite 200
Project Specifications	1500 La Jolla Village Drive, Suite 200
Project Requirements	1500 La Jolla Village Drive, Suite 200
Project Conditions	1500 La Jolla Village Drive, Suite 200
Project Parameters	1500 La Jolla Village Drive, Suite 200
Project Variables	1500 La Jolla Village Drive, Suite 200
Project Constants	1500 La Jolla Village Drive, Suite 200
Project Limits	1500 La Jolla Village Drive, Suite 200
Project Boundaries	1500 La Jolla Village Drive, Suite 200

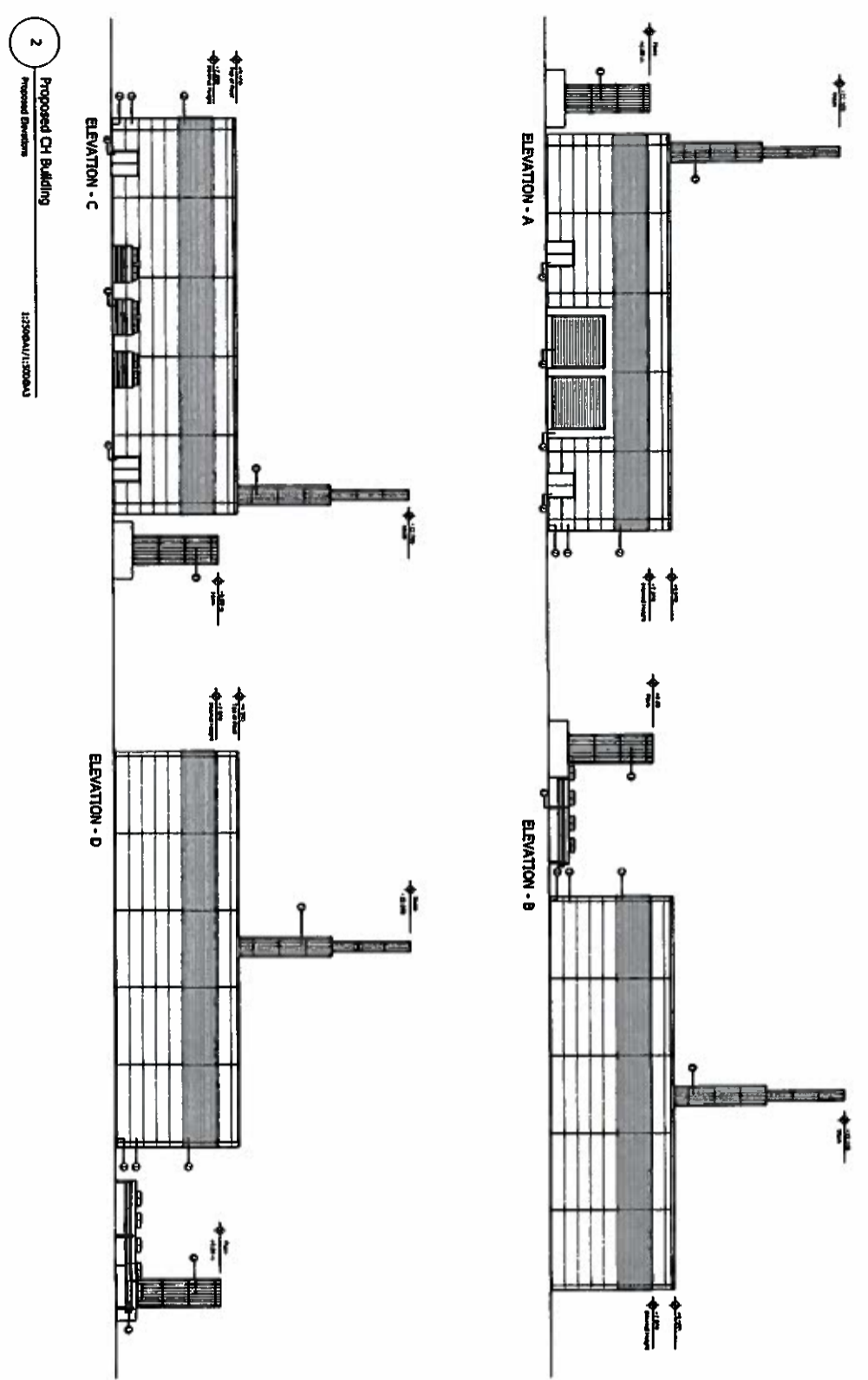
1500 La Jolla Village Drive, Suite 200  
 San Diego, CA 92161  
 Tel: 619.441.3100  
 Fax: 619.441.3101  
 www.sandiego.gov/planning



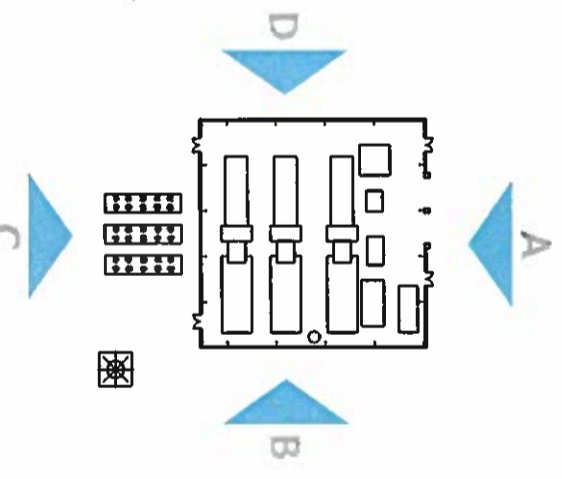
1 Proposed AD Buildings  
 1:250@A1/1:500@A3



AGENDA ITEM 4B)  
 CIRCULATED AT  
 MEETING



2 Proposed CH Building  
 1:250@A1/1:500@A3



**MATERIALS KEY**

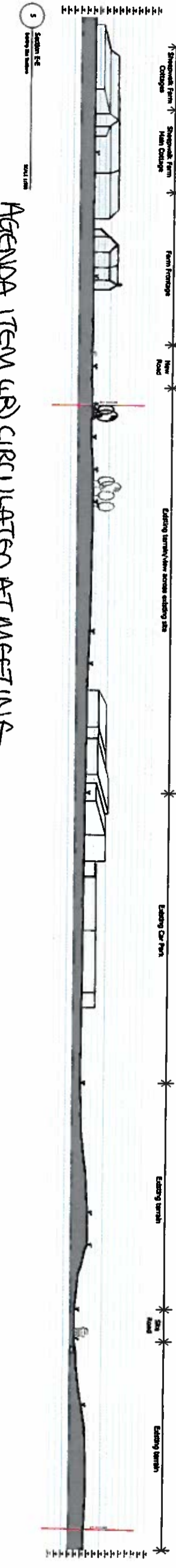
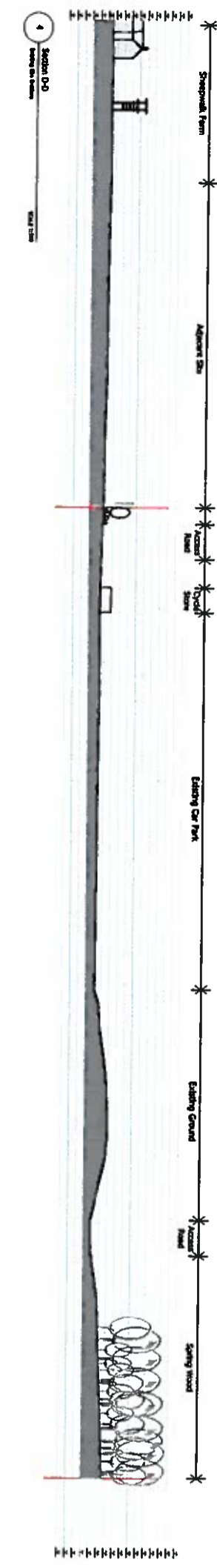
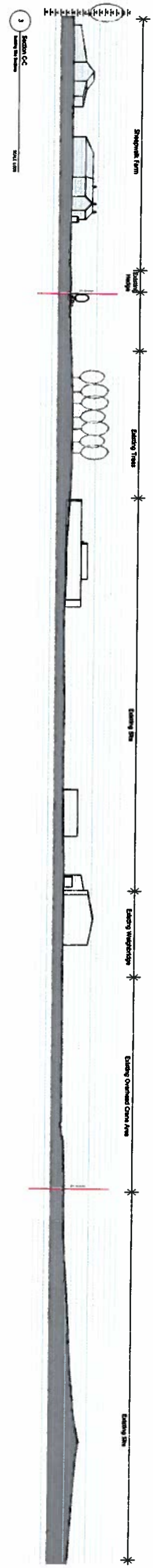
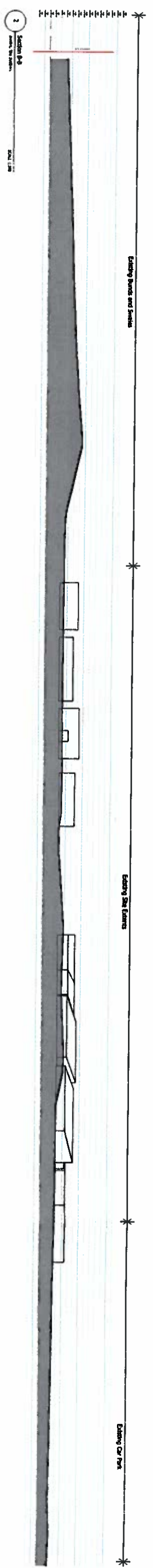
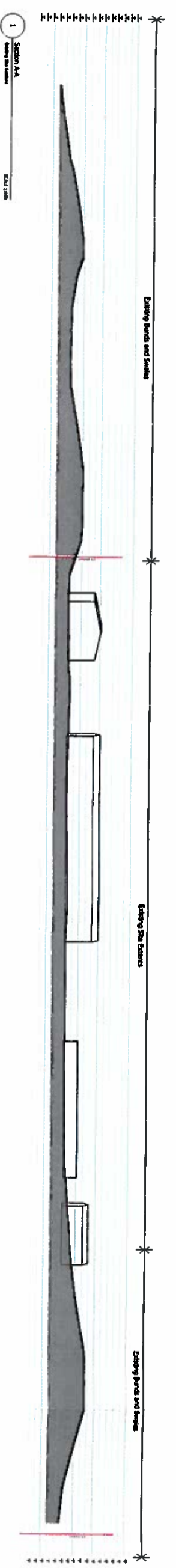
1. MAIN ELEVATIONS TO AD/CHP BUILDING, IN LIGHT GREY/SILVER - SMOOTH FINISH CLADDING PANEL SYSTEM
2. UPPER AD/CHP BUILDING ELEVATION CLADDING SYSTEM IN DARK GREY PROFILED PANEL
3. ROOF CLADDING PANEL SYSTEM RESEDA GREEN OR SIMILAR
4. SERVICE DOORS, MID GREY FAST ACTING WITH YELLOW WARNING CHEVRONS/SKIRT
5. SERVICE DOOR SURROUNDS IN DARK GREY
6. MEANS OF ESCAPE DOORS IN MID GREY
7. BRICK COURSE/PLINTH IN DARK GREY
8. BRISE SOLIEL/OUVERES IN TIMBER
9. AD TANKS FINISHED IN RESEDA GREEN OR SIMILAR
10. AD TANK FARM PERIMETER WALL IN FAIR FACED CONCRETE FINISH
11. AD STACKS FINISHED IN SILVER/LIGHT GREY
12. WEIGHBRIDGE KIOSK, BRICK PLINTH COURSING IN GREY UPPER CLADDING PANELS IN RESEDA GREEN
13. ALL AUXILIARY AD COMPONENTS IN GREY/SILVER - GLAZED FINISH

INTERNAL LAYOUTS OF AD AND CHP PROCESS BUILDINGS ARE INDICATIVE

**PLANNING**

Project: North Selby AD and Glasshouse Buildings  
 Drawing Title: Proposed AD Buildings Elevations  
 Drawing No: PP-013  
 Date: October 2012  
 Scale: 1:250@A1/1:500@A3P  
 Drawn By: HC/NH  
 Check By: P  
 Project No: 21092



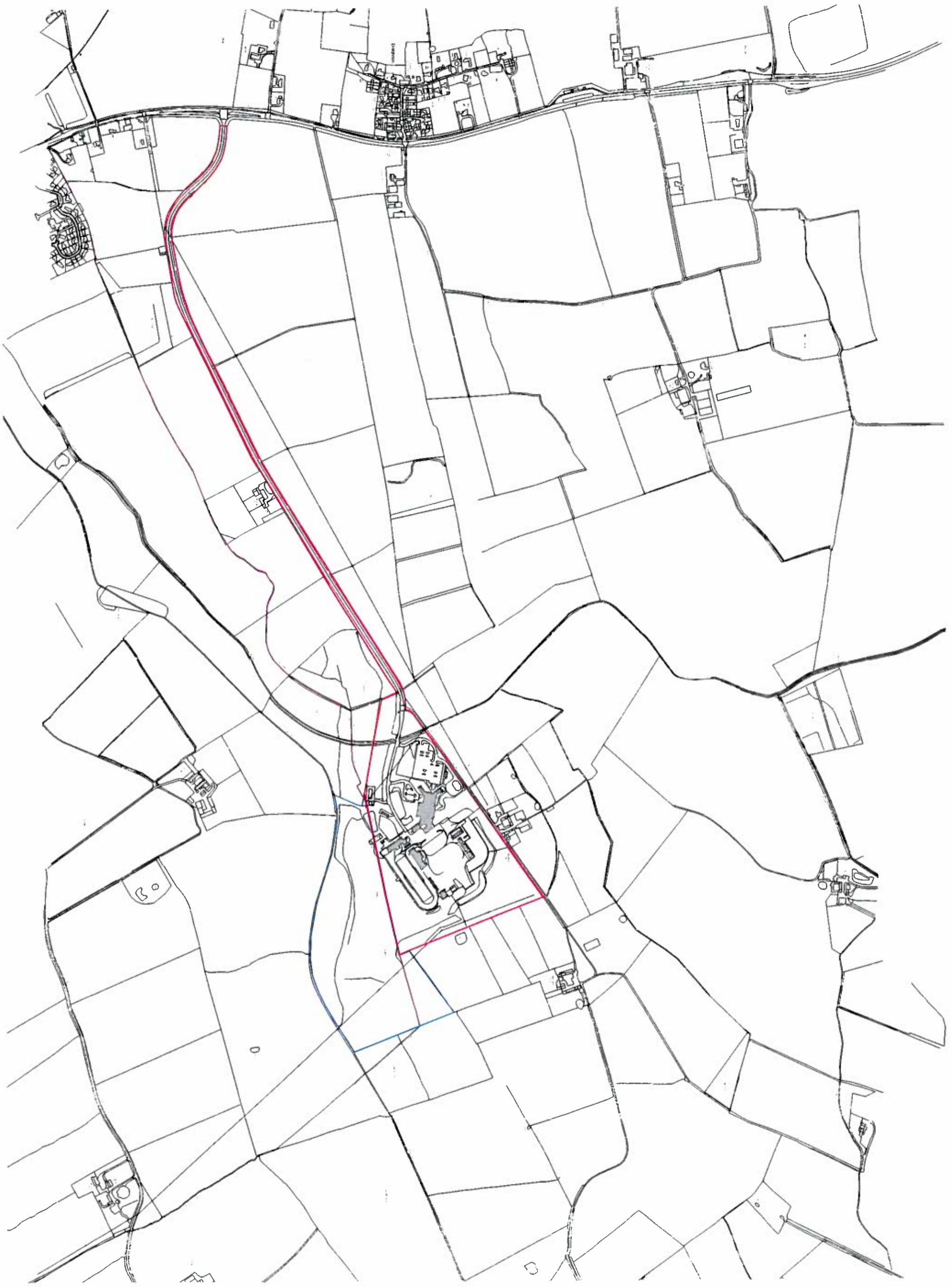



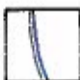

AGENDA ITEM 4(B) CIRCULATED AT MEETING

**PLANNING**

Project:  
North Selby  
AD and Gasstore Buildings  
Existing Site Sections  
A-A, B-B, C-C, D-D  
October 2017  
Drawing No: P-004  
21992





-  Site Boundary
-  Ownership Boundary
-  L.A. Boundary

RED LINE SITE  
 AREA:  
 23.3 ha

AGENDA ITEM  
 (B)  
 CIRCULATED  
 AT  
 MEETING



PLANNING

Project: North Selby  
 AD and Glass House Buildings  
 Drawing Title: Application Site Location Plan  
 Date: October 2012  
 Scale: 1:5000  
 Project No: PP-001  
 Drawing No: PP-001  
 Date by: [blank]  
 Drawn by: [blank]  
 Checked by: [blank]  
 Project No: [blank]  
 Drawing No: [blank]  
 Revision: P



AGENDA ITEM 4B)  
CIRCUATED AT  
MEETING

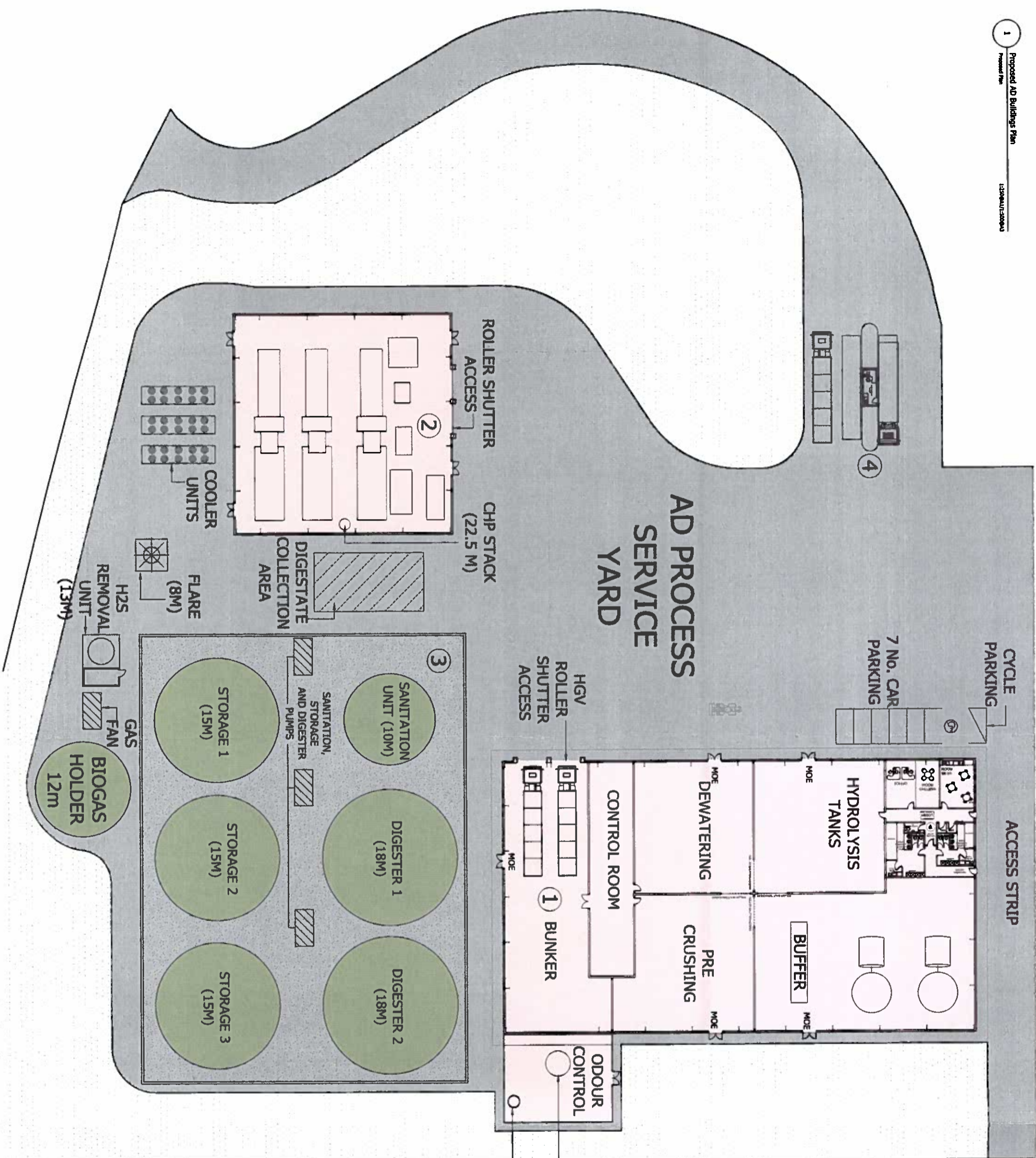


Rendered views are for illustrative purposes only. Images have been created using 3D modelling software, base line information and topographical data. Views represent architectural intent to demonstrate the indicative development in context.

**PLANNING**

Project:  
North Selby  
AD and Glasshouse Buildings  
Drawing Title:  
Proposed Illustrative Views  
View from North East  
Drawn by: NTS  
Date: October 2012  
Scale: NTS  
Project No: 21092  
Drawing No: PP-020  
Check by: NC/NH  
Author: P

**BARTON WILMORE**  
Planning & Urban Design  
Architects, Landscape Architects, Urban Design  
Environmental & Sustainability Assessment • Civic Design  
BartonWilmore.co.uk



- Key:**
- 1 - Anaerobic Digestion Facility
  - 2 - CHP Building
  - 3 - AD Tank Farm
  - 4 - Weighbridge

AGENDA ITEM 4B)  
 CIRCULATED AT  
 MEETING

REMOVAL UNIT (10M)  
 ODOUR CONTROL STACK (15M)

INTERNAL LAYOUTS OF AD AND CHP PROCESS BUILDINGS ARE INDICATIVE



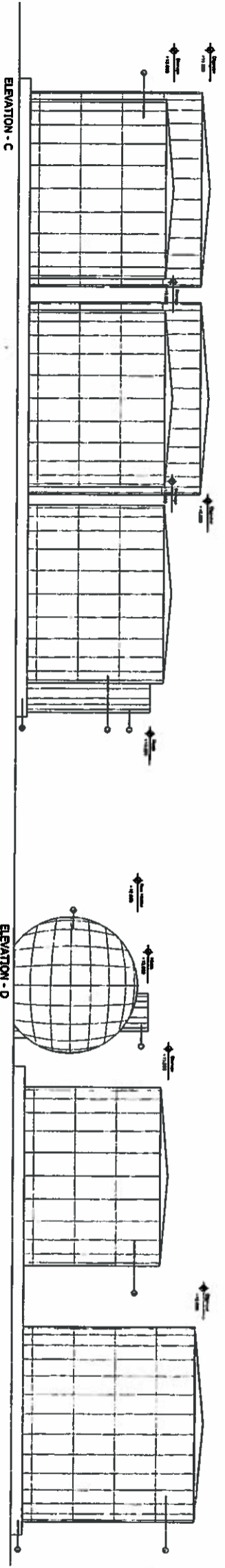
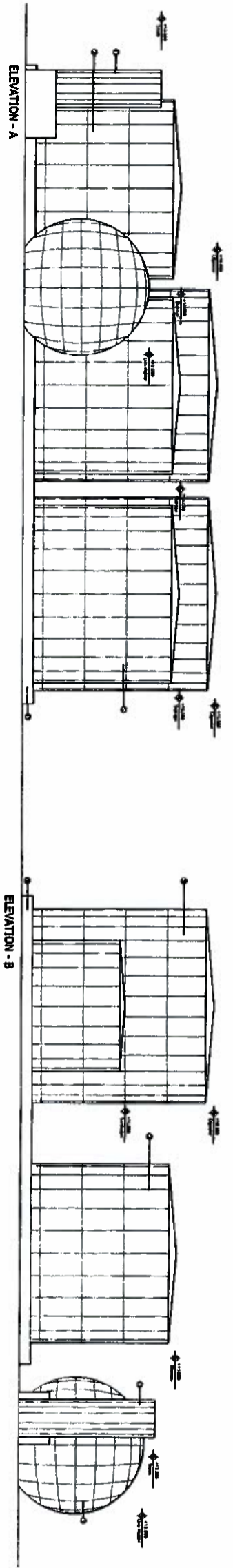
PLANNING

**Project:** North Selby AD and Glasshouse Buildings  
**Drawing Title:** Proposed AD Buildings Floor Plan  
**Date:** October 2012  
**Scale:** 1:250 (A1/35000) RP  
**Drawn by:** NC/NM  
**Checked by:** P  
**Project No:** PP-012  
**Revision:** P

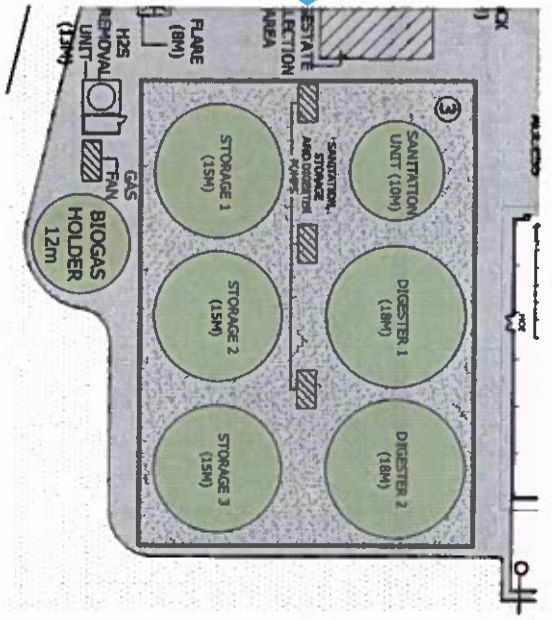


AGENDA ITEM 4(B)

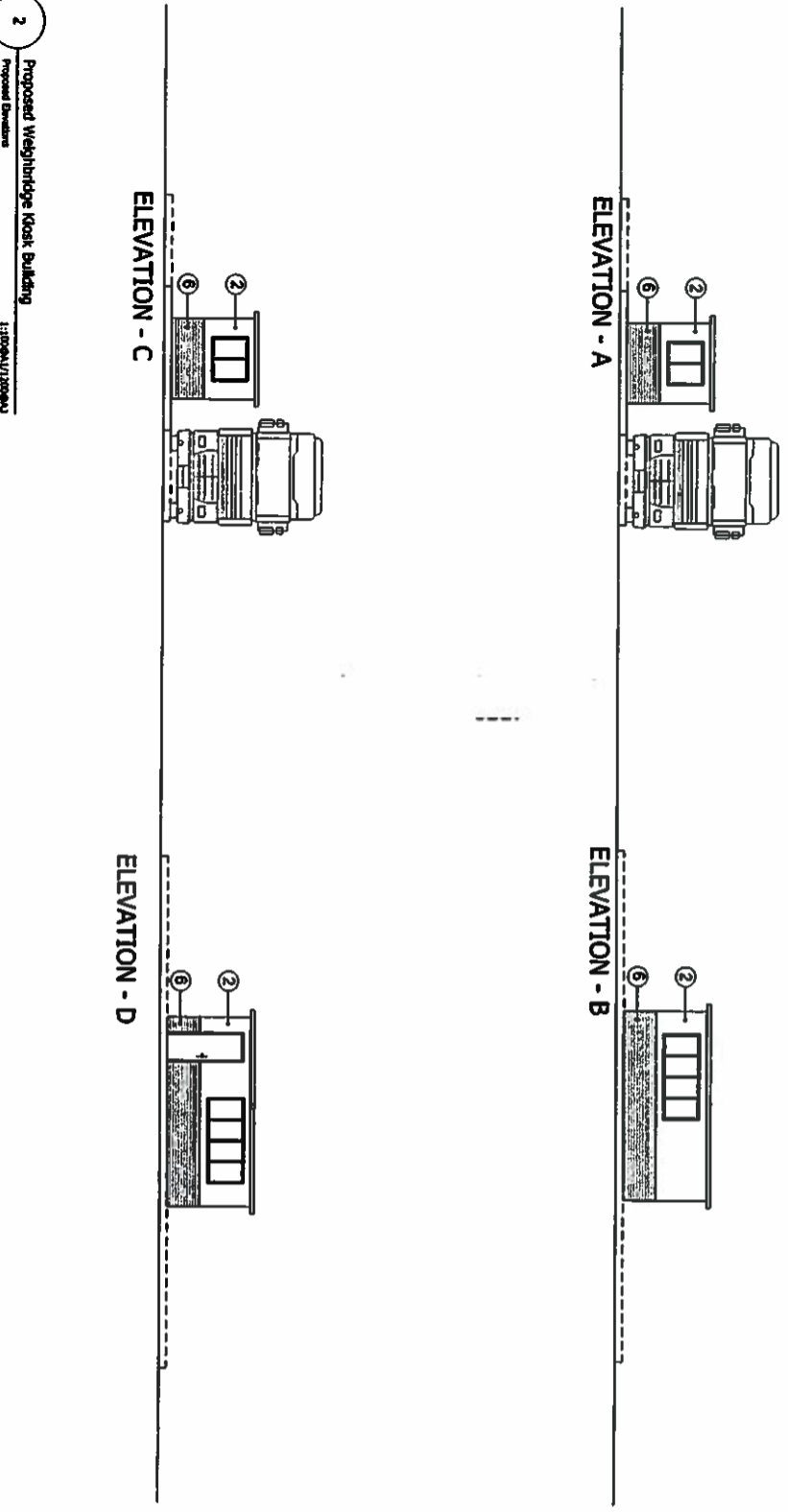
CIRCULATED  
 AT  
 MEETING



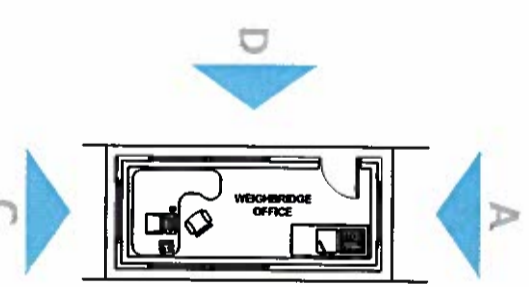
1 Proposed AD Buildings - Tank Farm  
 Proposed Elevations  
 1:200(A)/1:200(B)



A



2 Proposed Weighbridge Kiosk Building  
 Proposed Elevations  
 1:100(A)/1:200(B)



A B C D

**MATERIALS KEY**

1. MAIN ELEVATIONS TO AD/CHP BUILDING IN LIGHT GREY/SILVER - SMOOTH FINISH CLADDING PANEL SYSTEM
2. UPPER AD/CHP BUILDING ELEVATION CLADDING SYSTEM IN DARK GREY PROFILED PANEL
3. ROOF CLADDING PANEL SYSTEM - RESEDA GREEN OR SIMILAR
4. SERVICE DOORS, AND GREY FAST ACTING WITH YELLOW WARNING CHEVRONS/SKIRT
5. SERVICE DOOR SURROUNDS IN DARK GREY
6. MEANS OF ESCAPE DOORS IN MID GREY
7. BRICK COURSE/PILTH IN DARK GREY
8. BRISE SOLID/OUVRES IN TIMBER
9. AD TANKS FINISHED IN RESEDA GREEN OR SIMILAR
10. AD TANK FARM PERIMETER WALL IN FAIR FACED CONCRETE FINISH
11. AD STACKS FINISHED IN SILVER/LIGHT GREY
12. WEIGHBRIDGE KIOSK, BRICK PLINTH COURSE AND BRICK CLADDING PANELS IN RESEDA GREEN
13. ALL AUXILIARY AD COMPONENTS IN GREY/SILVER - GLAVANISED FINISH.

INTERNAL LAYOUTS OF AD AND CHP PROCESS BUILDINGS ARE INDICATIVE

**PLANNING**

Project:  
 North Selby  
 AD and Glasshouse Buildings  
 Drawing Title:  
 Proposed AD Buildings Elevations  
 Drawing No:  
 21092  
 Date:  
 October 2012  
 Scale:  
 1:200(A)/1:200(B)  
 Project No:  
 21092



AGENDA ITEM 4(B)  
 CIRCULATED AT  
 MEETING



Rendered views are for illustrative purposes only. Images have been created using 3D modelling software, baseline information and topographical data. Views represent architectural intent to demonstrate the indicative development in context.

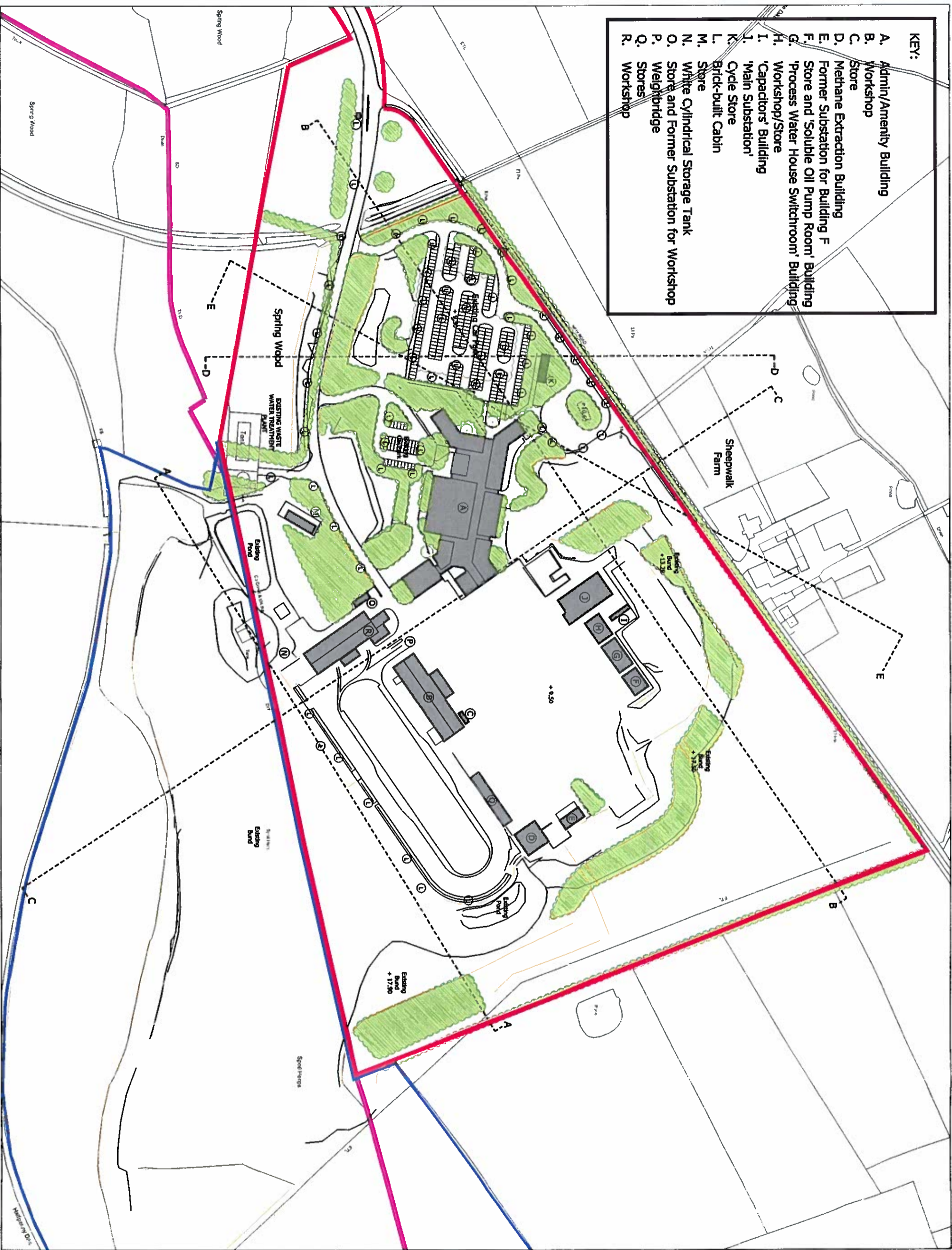
**PLANNING**

**Project:** North Selby  
 AD and Glasshouse Buildings  
**Drawing Title:** Proposed Illustrative Views  
**Date:** October 2012  
**Project No:** 21092

**Drawn by:** NCFM  
**Checked by:** NCFM  
**Approved by:** P

**KEY:**

A.	Admin/Amenity Building
B.	Workshop
C.	Store
D.	Methane Extraction Building
E.	Former Substation for Building F
F.	Store and 'Soluble Oil Pump Room' Building
G.	'Process Water House Switchroom' Building
H.	Workshop/Store
I.	'Capacitors' Building
J.	'Main Substation'
K.	Cycle Store
L.	Brick-built Cabin
M.	Store
N.	White Cylindrical Storage Tank
O.	Store and Former Substation for Workshop
P.	Weightbridge
Q.	Stores
R.	Workshop



- Site Boundary
  - Ownership Boundary
  - L.A. Boundary
  - Existing Buildings
  - Existing Vegetation
  - Existing Lighting Towers
  - Existing Fence LINES
- AGENDA ITEM (B)  
 CIRCULATED  
 AT  
 MEETING

**PLANNING**

Project  
 North Selby  
 AD and Glass House Buildings

Drawn by  
 MC/NM

Checked by  
 P

Date  
 October 2012

Scale  
 1:1250 (A4) / 1:2500 (A3)

Project No  
 PP-002

Revision  
 P

**Key:**

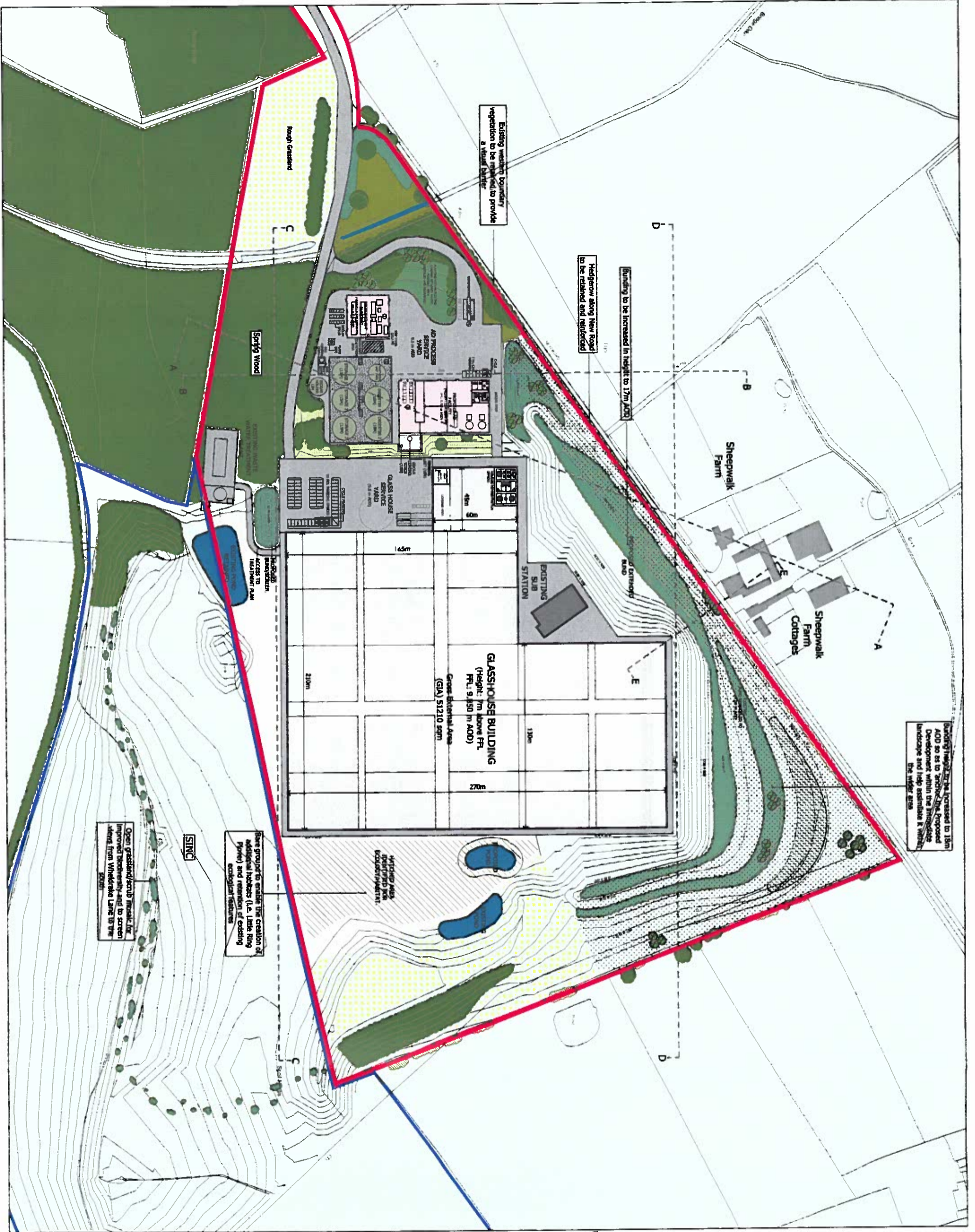
- 1 - Anaerobic Digestion Facility
- 2 - CHP Building
- 3 - AD Tank Farm
- 4 - Weighbridge

**Site Boundary**

**Existing Planting/Vegetation**

**Proposed Extended Burd & Landscaping**

AGENDA ITEM (4B)  
 CIRCULATED  
 AT MEETING+



**PLANNING**

Project: North Selby AD and Glasshouse Buildings

Masterplan Layout (Proposed Site Plan)

Drawn by: [Name]

Checked by: [Name]

Date: October 2012

Project No: 20197

Drawing No: PE\_008

Revision: P1

**BARTON WILMORE**

Planning & Master Planning & Urban Design  
 Architecture & Landscape Planning & Design & Project Control  
 Environmental & Sustainability Assessment & Impact Study

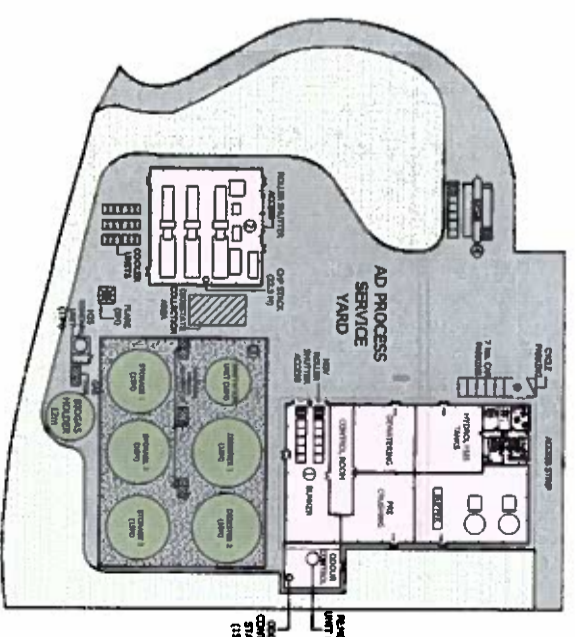
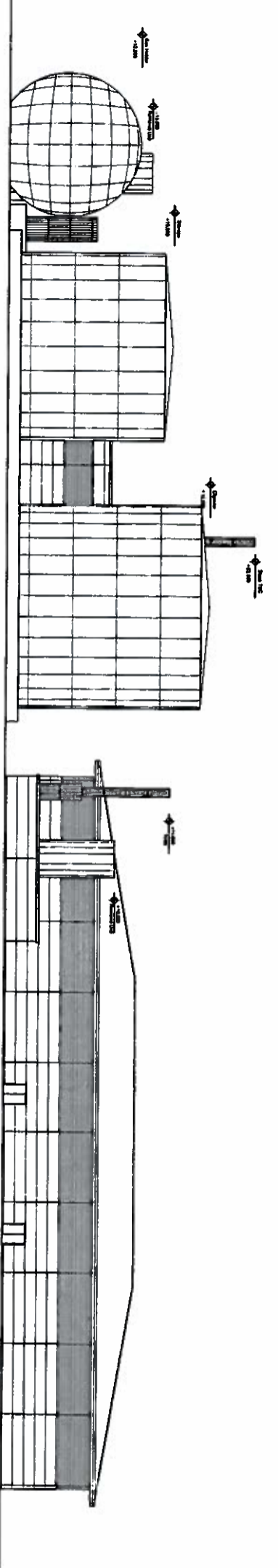
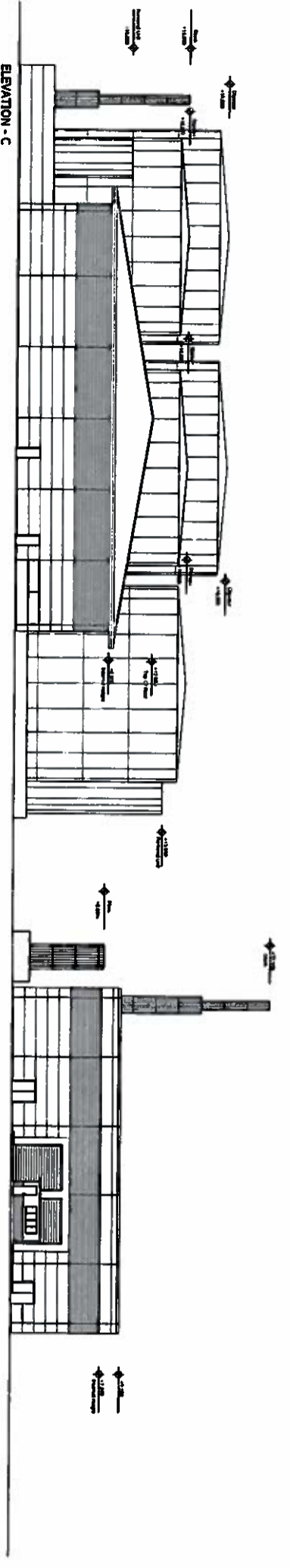
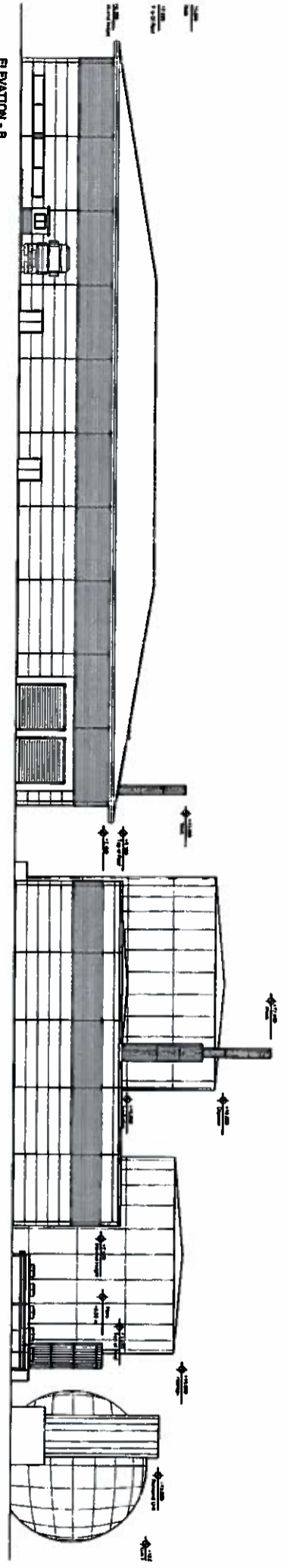
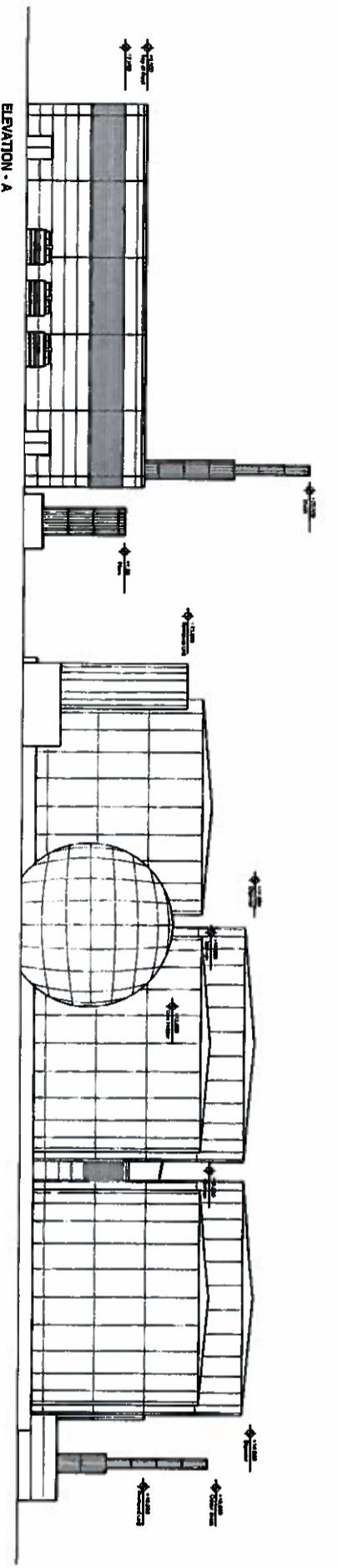
Information@barton-wilmore.co.uk

23.10.12 11:04:20 AM 23.10.12 11:04:20 AM Barton Wilmore Internal Use Only. Copy & Reproduction Prohibited. Any use of this drawing without the prior written consent of Barton Wilmore is prohibited.





AGENDA ITEM 4B) CIRCULATED AT MEETING



**MATERIALS KEY**

1. MAIN ELEVATIONS TO AD/CHP BUILDING IN LIGHT GREY/SILVER - SMOOTH FINISH CLADDING PANEL SYSTEM
2. UPPER AD/CHP BUILDING ELEVATION CLADDING SYSTEM IN DARK GREY PROFILED PANEL
3. ROOF CLADDING PANEL SYSTEM RESEDA GREEN OR SIMILAR
4. SERVICE DOORS, MID GREY FAST ACTING WITH YELLOW WARNING CHEVRON/SKIRT
5. SERVICE DOOR SURROUNDS IN DARK GREY
6. MEANS OF ESCAPE DOORS IN MID GREY
7. BRICK COURSE/PILTH IN DARK GREY
8. BRISE SOLID/OUVRES IN TIMBER
9. AD TANKS FINISHED IN RESEDA GREEN OR SIMILAR
10. AD TANK FARM PERIMETER WALL FINISHED IN RESEDA GREEN
11. AD STACKS FINISHED IN SILVER/LIGHT GREY
12. WEAIRIDGE KIOSK, BRICK PILTH CLADDING IN RESEDA GREEN
13. ALL AUXILIARY AD COMPONENTS IN GREY/SILVER - GALVANISED FINISH

INTERNAL LAYOUTS OF AD AND CHP PROCESS BUILDINGS ARE INDICATIVE

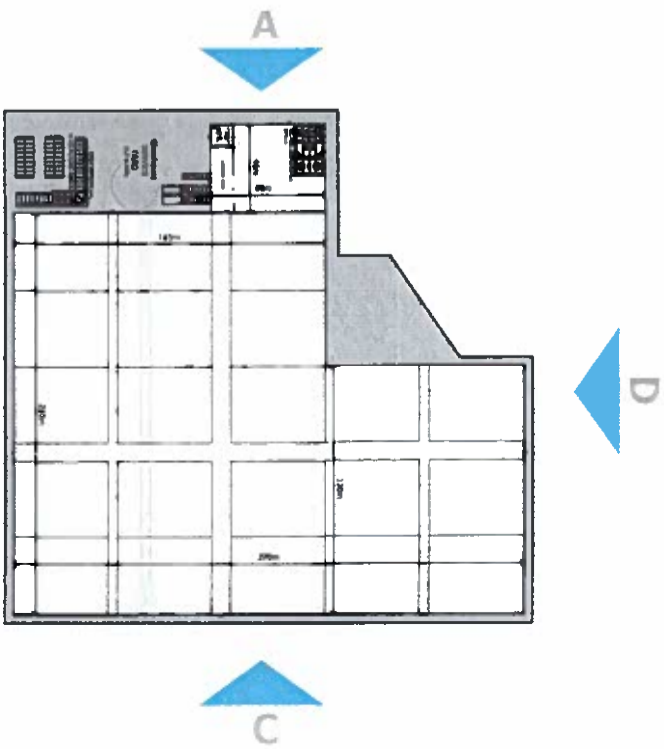
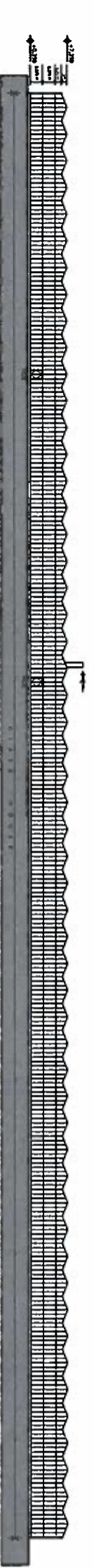
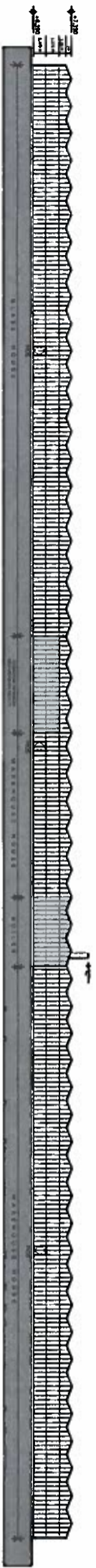
**PLANNING**

Project:  
 North Selby  
 AD and Glasshouse Buildings  
 Drawing Title:  
 Proposed AD Buildings Elevations - Overall  
 Date:  
 October 2012  
 Project No:  
 21092

Scale:  
 1:250 (A1/2500A) RP  
 Drawing No:  
 PP-015

Drawn by:  
 NCL/JNH  
 Checked by:  
 P

**BARTON WILMORE**  
 Planning • Master Planning & Urban Design  
 Architecture • Landscape Planning & Design • Project Services  
 Environmental & Sustainability Assessment • Technical Services



**MATERIALS**

- GLASSHOUSE ELEVATIONS:**
- GLASS TYPE: CLEAR
- FRAME, TRIMS AND CAPPINGS: COLOUR WHITE: RAL 9010
- GUTTERS AND SOFFITS: COLOUR WHITE: RAL 9010
- DELIVERY DOORS:**
- SERVICE DOORS, MID GREY
- FAST ACTING WITH YELLOW FANNING CHEVRON/SKIRT, SERVICE DOOR SURROUNDS IN DARK GREY.
- COVER OVER WELFARE/ADMIN: PAINTED PLY WHITE RAL 9010
- COVER OVER BOILER: WHITE SMOOTH CLADDING PANEL SYSTEM
- BOILER FLUE: LIGHT GREY SILVER

**PLANNING**

Project: North Selby  
 AD and Glasshouse Buildings  
 Drawing Title: Proposed Glasshouse Elevations  
 Date: October 2012  
 Scale: 1:500 (A4/1:1000 A3)  
 Project No: 21092  
 Drawing No: PP-011  
 Author: P



Barton Wilmore  
 Architects & Planners  
 Environmental & Sustainable Assessment & Creative Design  
 25/10/12

AGENDA ITEM 4 CIRCULATED AT MEETING